



# Partfill

200 L / MIN



# TOPAZ PARTFILL

## PRODUCT INFO



# Partfill



### Description

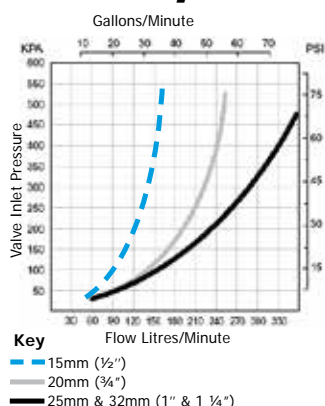
Topaz Partfill is a high flow valve intended for use in rain water harvesting tanks. The purpose of the float valve is to automatically maintain a low level of water in the tank during periods of no or low rainfall. This allows services fed by the tank to continue while leaving capacity in the tank for refilling by the next rain.

### Applications

Maintaining water levels in:

- Rain water harvesting tanks
- Water cisterns
- Irrigation and process applications.

### Flow Graph



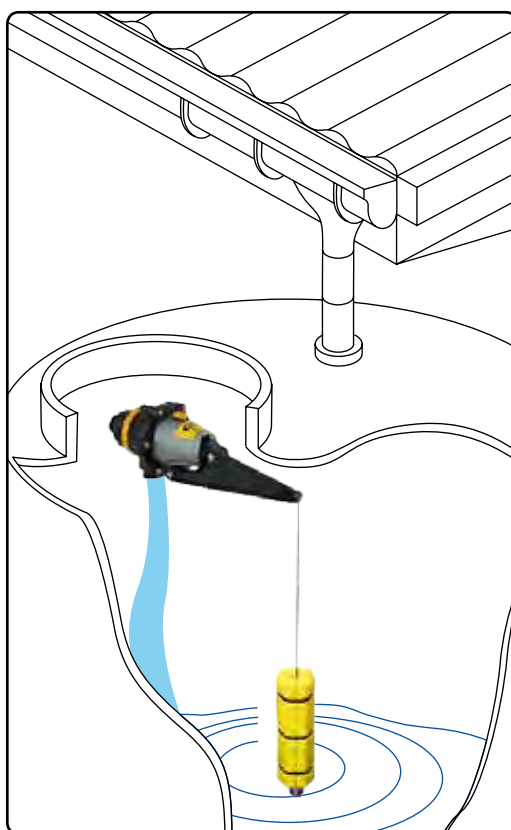
### Features

- Ideal for use with all makes and models of rain water harvesting tanks
- Compact
- Constructed from non corroding materials
- Valve can be locked in off position using the lock off switch
- Up to 150mm differential obtainable (dependant on pressure)
- Detach Valve Seal Access System for quick access to valve seal (Patented)

### Available Inlet Sizes

15mm (1/2")  
20mm (3/4")  
25mm (1")  
32mm (1 1/4")

All supplied in long tail thread with back nut.



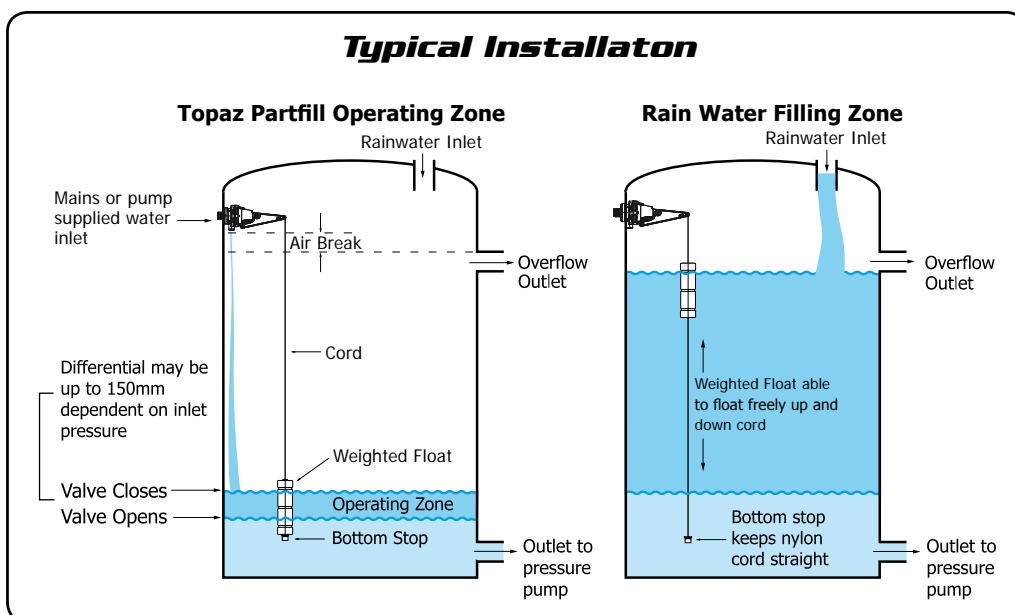
### Principle of Operation

- The Valve is installed through the side wall of a storage tank. It should be mounted above the overflow level of the tank to prevent backflow.
- As the tank empties the weighted float travels down the cord and sits on the bottom stop to activate the valve.
- The valve will run until the weighted float lifts clear of the bottom stop.
- The float will then rise as rainwater fills the tank and falls as the tank water is used.
- The Valve will only function at times when rain fall is insufficient to maintain a water level in the tank above the bottom stop.

### Pressure Range

0.3 Bar – 10 Bar (5 psi-150 psi)

### Typical Installaton



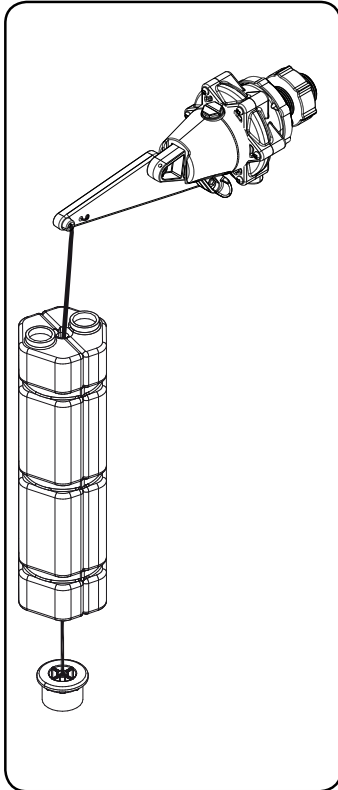
# TOPAZ PARTFILL

## DIMENSIONS & MATERIALS

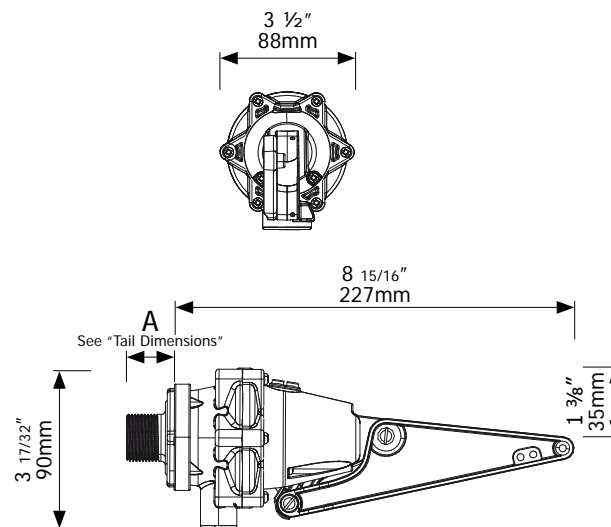


# Partfill

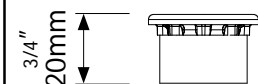
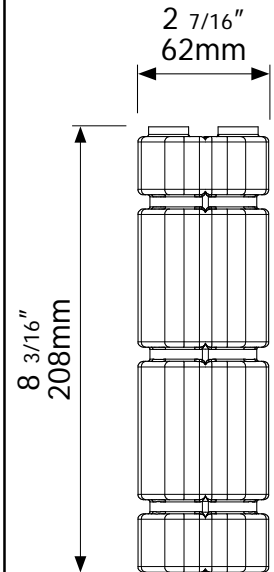
200 L / MIN



### Topaz Dimensions



### Float & Weight Dimensions



### Tail Dimensions

| Dimension A             | mm  | inches  |
|-------------------------|-----|---------|
| 15mm (1/2") Long Tail   | 100 | 3 15/16 |
| 20mm (3/4") Long Tail   | 46  | 1 13/16 |
| 25mm (1" ) Long Tail    | 62  | 2 7/16  |
| 32mm (1 1/4") Long Tail | 67  | 2 21/32 |

| Part                                     | Material           | Part                                     | Material            |
|--|--------------------|--|---------------------|
| <b>Valve Body</b>                        | Glass Filled Nylon | <b>Springs, Bolts, Nuts, Pin, Screws</b> | 304 Stainless Steel |
| <b>Yellow &amp; White Internal Parts</b> | Acetal             | <b>O'Rings</b>                           | Nitrile             |
| <b>Filter</b>                            | PP/Nylon           | <b>Float</b>                             | HDPE                |
| <b>Diaphragm</b>                         | EPDM               | <b>Float Cord</b>                        | Polyester           |
| <b>Seal</b>                              | Urethane           |  |                     |

Maximum Operating Temperature

60°C, 140°F

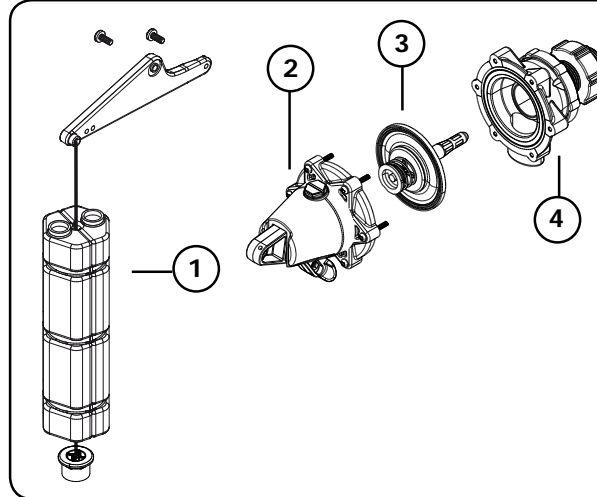
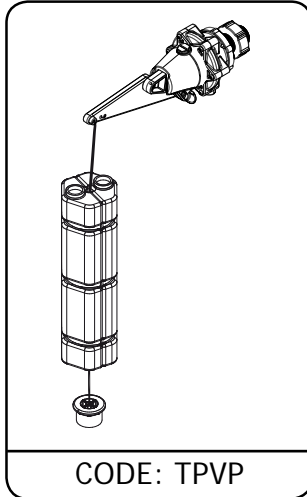
NB: High Temperature models on request.

# TOPAZ PARTFILL

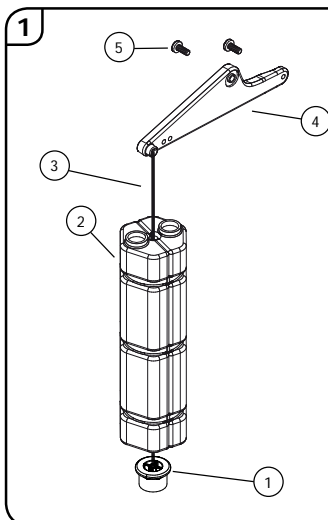
## PARTS IDENTIFICATION SHEET



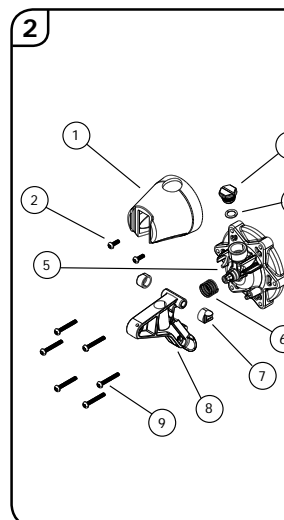
# Partfill



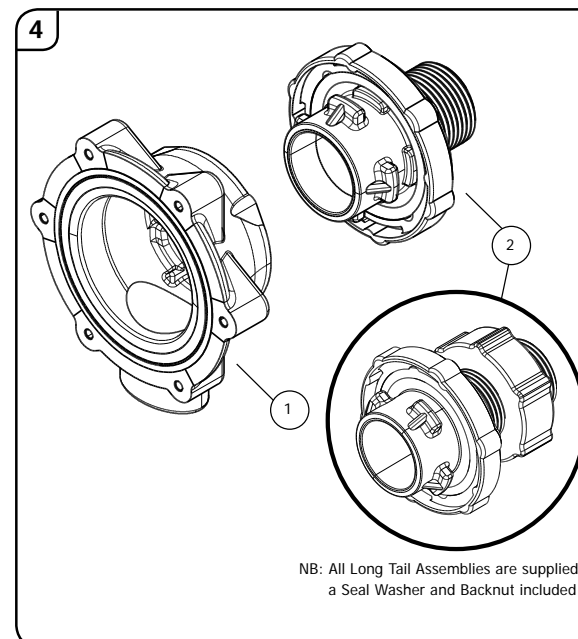
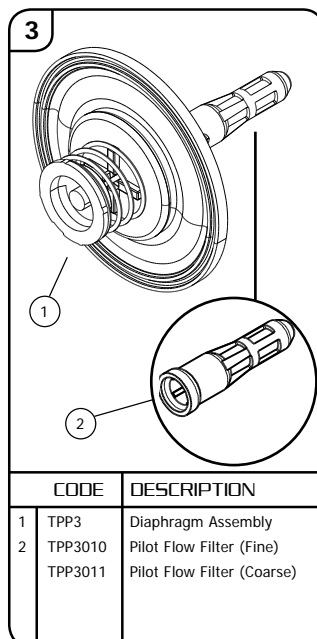
| CODE | DESCRIPTION                      |
|------|----------------------------------|
| 1    | TPPP1 Float, Arm & Stop Assembly |
| 2    | TPPP2 Cap & Actuator Assembly    |
| 3    | TPP3 Diaphragm Assembly          |
| 4    | Detach Base Assembly             |



| CODE | DESCRIPTION            |
|------|------------------------|
| 1    | TPPP010 Bottom Stop    |
| 2    | TPPP020 Weighted Float |
| 3    | TPPP1020 Cord          |
| 4    | TPPP1050 Arm Extension |
| 5    | TPP1040 M5 x 12 Bolt   |



| CODE | DESCRIPTION                   |
|------|-------------------------------|
| 1    | TPPP2011 Actuator Cap         |
| 2    | TPP2020 6g x 10 S/S Screw     |
| 3    | TPP2030 Frost Pro Plug        |
| 4    | TPP2040 Frost Pro O'ring      |
| 5    | TPP2050 Valve Cap Assembly    |
| 6    | TPPD2061 Damping Spring       |
| 7    | TPP2080 Bearings (set of two) |
| 8    | TPP2090 Actuator Arm          |
| 9    | TPP2100 6g x 25 S/S Screw     |



| CODE     | DESCRIPTION                        |
|----------|------------------------------------|
| 1        | DTP1 Detach Base                   |
| 2        | <b>BSP Tails</b>                   |
|          | Short Tail Assembly (BSP)          |
| DTP020   | Detach Tail 20mm(3/4") Short       |
| DTP025   | Detach Tail 25mm(1") Short         |
| DTP032   | Detach Tail 32mm(1 1/4") Short     |
|          | Long Tail Assembly (BSP)           |
| DTP015L  | Detach Tail 15mm (1/2") Long       |
| DTP020L  | Detach Tail 20mm (3/4") Long       |
| DTP025L  | Detach Tail 25mm (1" bsp) Long     |
| DTP032L  | Detach Tail 32mm (1 1/4" bsp) Long |
|          | <b>NPT Tails</b>                   |
|          | Short Tail Assembly (NPT)          |
| DTP0075  | Detach Tail 3/4" npt               |
| DTP0100  | Detach Tail 1" npt                 |
| DTP0125  | Detach Tail 1 1/4" npt             |
|          | Long Tail Assembly (NPT)           |
| DTP0050L | Detach Tail 1/2" npt Long          |
| DTP0075L | Detach Tail 3/4" npt Long          |
| DTP0100L | Detach Tail 1" npt Long            |
| DTP0125L | Detach Tail 1 1/4" npt Long        |